

# Partners

Coordinator:



The MODALES project ("MODify Drivers' behaviour to Adapt for Lower EmissionS") has received funding from the European Union's Horizon 2020 research and innovation programme under grant agreement No 815189.

The project responds to Horizon 2020 call MG-1.1: Reduction of transport impact on air quality (INCO Flagship), Topic A: "Low-emission oriented driving, management and assistance, exploring the impact of the user on emission production".

The project runs from 1 September 2019 to 31 May 2023.



[modales-project.eu](https://modales-project.eu)



[info@modales-project.eu](mailto:info@modales-project.eu)



[#MODALESproject](https://twitter.com/MODALESproject)



[MODALES project](https://www.linkedin.com/company/modales-project/)



**Adapting driver behaviour  
for lower emissions**



MODALES is working to reduce air pollution from all types of road vehicles by encouraging the adoption of low-emission driving behaviour and appropriate maintenance.

The project focuses on emissions from the following three sources:



**Powertrain  
exhaust**



**Brake  
wear**



**Tyre/road  
wear**

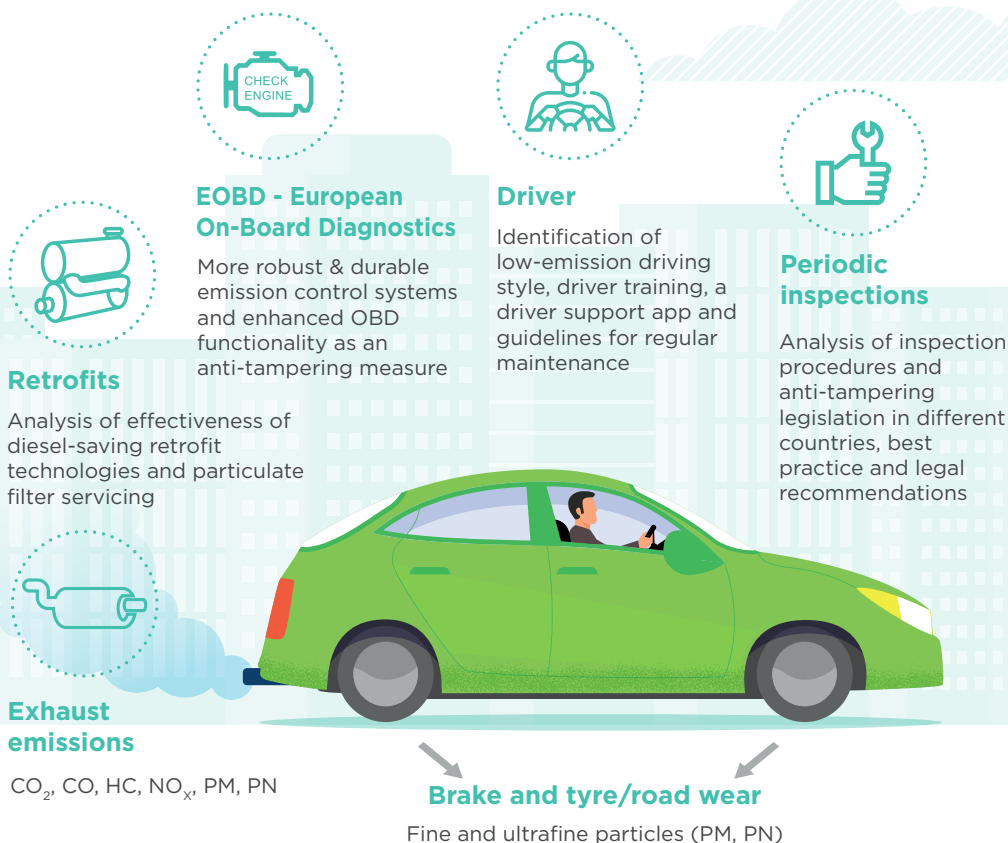
**[www.modales-project.eu](http://www.modales-project.eu)**

**MODALES** is an EU-funded project building a user-centric approach addressing the challenges of emissions from different sources in road vehicles. MODALES is researching, developing and testing a number of innovative and complementary solutions in four key areas:

- **Driving behaviour**
- **EOBD (European On Board Diagnostics)**
- **Retrofits**
- **Periodic vehicle roadworthiness inspections**

in order to substantially reduce vehicle emissions from three main sources: **powertrain**, **brake wear** and **tyre wear**.

## Main elements



## Key technical tasks

- Defining low-emission factors
- Impact of user behaviours
- Effectiveness of inspections and depollution systems
- Guidelines and tools for low-emission training (including app development)
- User trials and evaluation, featuring private and professional drivers of different vehicle types at sites across Europe and in China

## MODALES trial sites for evaluating the app and low-emission training



\* As an International Cooperation project, MODALES also plans user trials in Nanjing, China